



# MūL<sup>®</sup>-10

MūL-10

## MūL Spincast Reel

Instructions For Use

Qualia Corporation

Contact Us

Parts List, Reel Schematic

396B 7th St., #164

Phone: 415-382-1099

Novato, CA 94945, USA

Email: [qualia@ix.netcom.com](mailto:qualia@ix.netcom.com)

### Prepare yourself for a pleasant surprise

This spincast reel is full of features you'd usually pay much more to own:

- A chambered mainframe for maximum rigidity and strength.
- Polished stainless steel front and rear hoods for maximum strength and corrosion resistance.
- A soft-touch hood ring for easier gripping and turning of the hood.
- Powerful cast and machined all-metal drive gears.
- Right/Left convertible handle.
- Oversized aluminum spool.
- An automotive disc brake system for maximum strength, smoothest action and widest adjustment range.
- A positive, quick-acting anti-reverse system for consistent, maximum stopping strength.
- The comfort-touch grips keeps your hand in the fight for hour after hour of hard fishing.

So what do these specifications do for you? Truth be told, they do nothing for you until you go fishing.

But when you do go fishing with the MūL-10 reel, you'll find that these features give you a chance to fight harder, fight longer and fight with less fatigue. While all reels have a limit of durability, we purposely over-designed the MūL-10 so that you can test your skills to the limit.

Fish hard. Fish safe. And have fun!

MūL and Qualia are registered trademarks of Qualia Corporation.



---

## **CARE AND MAINTENANCE**

---

While we have done everything possible to make your MūL-10 Reel the highest value available, it remains a finely tuned piece of equipment that requires a minimal amount of care and maintenance. We congratulate you on your excellent choice of fishing equipment and recommend that you review the following maintenance suggestions; for the longest lasting pleasure with your tackle, we suggest adding these simple procedures to your regular fishing regimen.

---

### **BEFORE EACH FISHING TRIP**

---

Carefully consider your choice of equipment. We all know that we cannot reasonably expect a small sports car to carry the local football team to its games; every car is designed for a certain purpose. In the same way, all fishing equipment is designed for a limited set of circumstances. For the greatest fishing performance, your choice of equipment should consider the type of fishing for which it will be used.

- Check that the line on your reel is fresh. Most lines tend to stretch and degrade over time and lose both their pull test and knot strength.
- Check that the reel has been cleaned, greased and stored properly with the drag slightly loosened.
- Check that the rod guides are all in good condition (no broken or loose rings).
- Check that the rod seat holds the reel securely in place

---

### **AFTER EACH FISHING TRIP**

---

Clean both your rod and reel, lubricate your reel carefully, and back the drag off slightly before storing your reel. This is probably the most important recommendation for maintaining the longest working life of your reel and rod.

It is not necessary to submerge your reel in fresh water or hit it with a high-pressure blast of water. Few reels are dragged through mud or keel hauled behind a boat; therefore gently spraying your reel and rod with clean water after each fishing excursion and wiping them off thoroughly with a soft towel will take care of most cleaning requirements.

After cleaning, a light coating of a thin, high grade oil on all moving parts is recommended. While we strongly recommend using a competent service technician for maintaining the insides of your reel, we know that many folks who fish enjoy disassembling their reels both for fun and for maintenance purposes. To assist those who do disassemble their reel, the attached exploded drawing should help explain the parts and assembly of your MūL-10 Reel, and to help if ordering parts is required.

---

### **ONCE EACH SEASON**

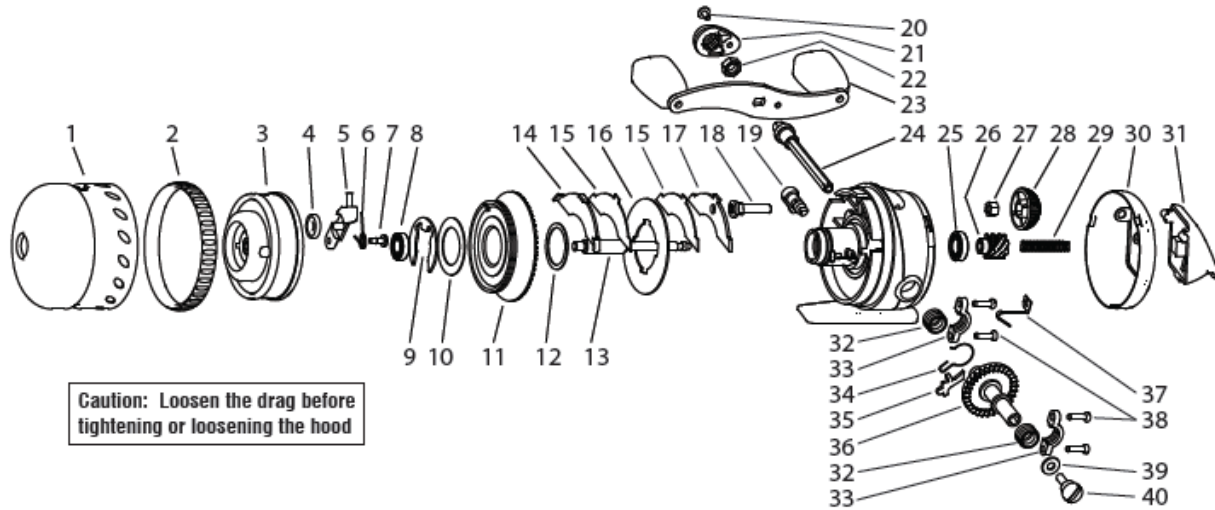
---

If you properly maintain your reel and rod as recommended above, it is unlikely that you will ever need to send your reel in for service. Nonetheless, we recommend an occasional trip to a service center for a professional cleaning and service of your reel.

Service centers generally use better grades of grease and oil than most folks keep on hand, and it is very helpful to have a trained eye inspect your reel occasionally to make sure no unforeseen problems are developing.

If you follow the above recommendations, you should look forward to many enjoyable fishing experiences. Thank you again for your purchase of this outstanding MūL-10 Reel.

## PARTS SCHEMATIC



- |                         |                            |                                |
|-------------------------|----------------------------|--------------------------------|
| 1. Hood assembly        | 17. Back caliper           | 29. Mainshaft spring           |
| 2. Hood grip ring       | 18. Drag plunger           | 30. Back cover                 |
| 3. Rotor assembly       | 19. A/R switch             | 31. Push button                |
| 4. Carrier roller       | 20. Handle nut cover screw | 32. Main gear bushing (2)      |
| 5. Pin carrier assembly | 21. Handle nut cover       | 33. Bushing retainer           |
| 6. Carrier spring       | 22. Handle nut             | 34. A/R friction spring        |
| 7. Carrier screw        | 23. Handle assembly        | 35. A/R pawl                   |
| 8. Shaft ball bearing   | 24. Handle shaft           | 36. Main gear                  |
| 9. Spool clip           | 25. Pinion ball bearing    | 37. A/R switch spring          |
| 10. Front spool washer  | 26. Pinion gear            | 38. Bushing retainer screw (4) |
| 11. Spool assembly      | 27. Drag dial nut          | 39. Handle screw washer        |
| 12. Back spool washer   | 28. Drag dial              | 40. Handle screw               |
| 13. Main shaft          |                            |                                |
| 14. Front caliper       |                            |                                |
| 15. Friction pad (2)    |                            |                                |
| 16. Drag disk           |                            |                                |